



CRITERION 4 - INFRA STRUCTURE AND LEARNING RESOURCES

KEY INDICATOR 4.4 - MAINTANANCE OF CAMPUS INFRASTRUCTURE

Metric No 4.4.2 There are established system and procedures for maintaining and utilizing physical, academic and support facilities - Laboratory, Library, Classrooms etc...,

S.NO	CONTENT	PAGE NO
1	Maintenance Policy	2
2	Maintenance of Classrooms Report	3
3	Maintenance of Library Report	4
4	MAINTENANCE OF COMPUTING FACILITIES	5
5	Maintenance of Laboratory Report	6
6	6. MAINTENANCE OF OTHER AMENITIES	7

PRINCIPAL
Samskruti College of Engineering & Technology
Kondapur, Ghatkesar Municipality, Medchal (D)

PRINCIPAL
Samskruti College of Engineering & Technology
Kondapur, Ghatkesar Municipality, Medchal (D)



1. INTRODUCTION

SAMSKRUTICOLLEGE OF ENGINEERING AND TECHNOLOGY owns and operates an extensive infrastructure to deliver its teaching, learning and research programs. The institution has structured system for maintenance and utilization of class rooms, computers and laboratories in the campus to ensure effective usage of the existing infrastructure facilities. The physical facilities are maintained by the Maintenance Team. Which comprises skilled faculty for supervision and Lab technician for service from Civil, Mechanical, EEE, ECE and Computer Science Departments, the maintenance team is responsible for the uninterrupted power supply, maintenance of equipment like general Lighting, power distribution system. solar panels, water pumps, etc., The request for maintenance is initiated through the service request form available, through which the particulars about the nature of maintenance is informed to the authorities for corrective action. After getting approval for the request. The maintenance team will attend, diagnose the fault and rectify it or else suggest for external services from suppliers or other service providers. If the service does not come under guarantee/warranty/free service period, quotations are received from the supplier as well as from two other companies. Comparative statement be prepared and submitted to the principal with the recommendations of the respective HOD'S. The Maintenance Team members monitor the 'maintenance and cleanliness of the buildings, classrooms, labs, furniture. Campus ground. Sports facilities, staff lounges. Student's amenity areas, cafeteria and hostel buildings. Housekeeping services are maintained by then-house team and available during day time in all working; days' Roadside service and breakdown coverage services are undertaken by external services- Cleaning of vehicles, air fling and small repairs are undertaken by the transport department inside the college. Major repairs are carried out by exit automobile garages.

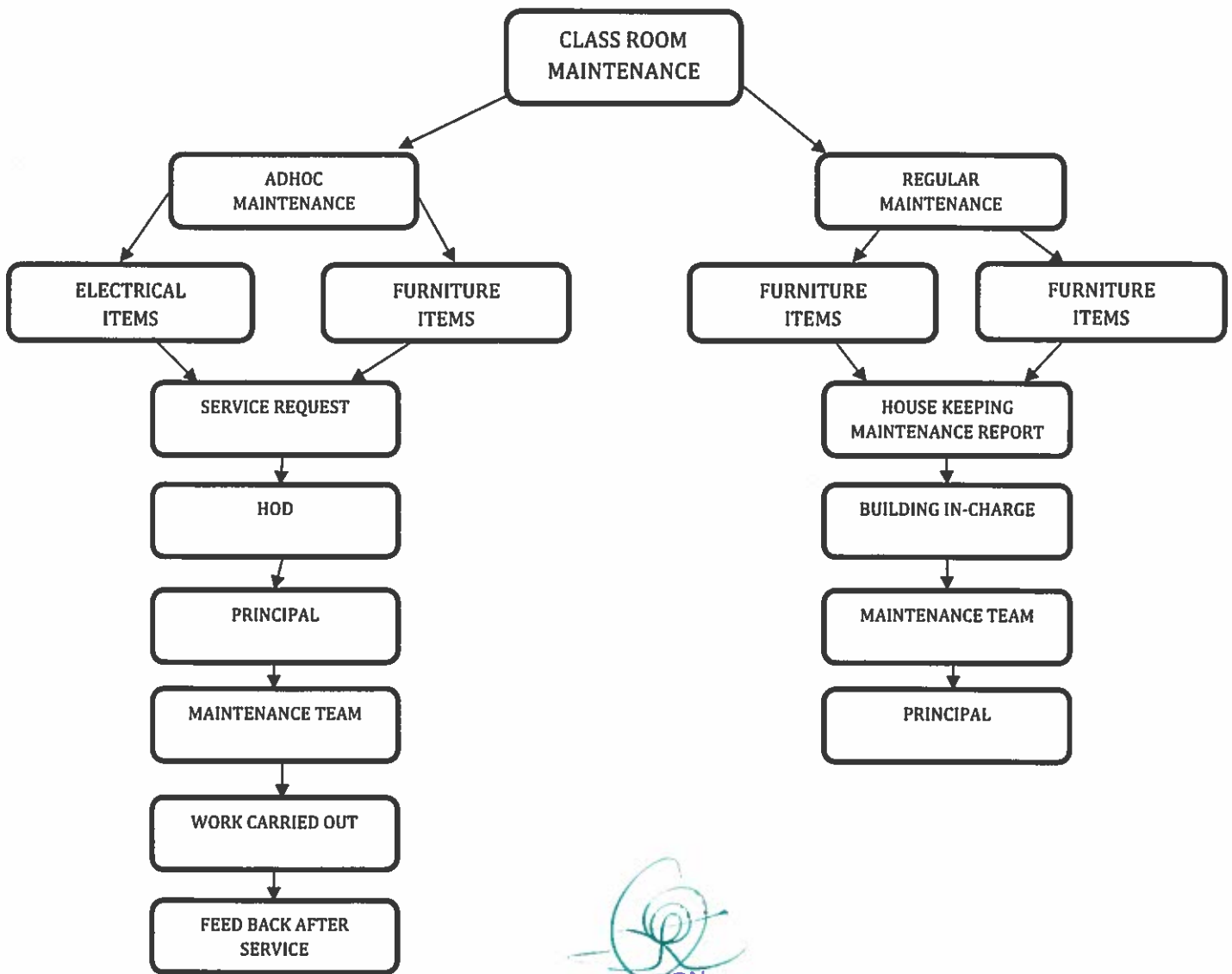
PRINCIPAL
Samskruti College of Engineering & Technology
Kondapur, Ghatkesar Municipality, Medchal (D)

PRINCIPAL
Samskruti College of Engineering & Technology
Kondapur, Ghatkesar Municipality, Medchal (D)



2. MAINTENANCE OF CLASSROOMS, FURNITURE AND LABORATORIES

Classrooms with furniture, teaching aids are maintained by the respective department faculties and lab assistants. The in-charges and lab assistants take care of their respective laborites



PRINCIPAL

FLOW CHART FOR CLASS ROOM MAINTENANCE

Samskruti College of Engineering & Technology
Kondapur, Ghatkesar Municipality, Medchal

PRINCIPAL
Samskruti College of Engineering & Technology
Kondapur, Ghatkesar Municipality, Medchal (D)



3. MAINTENANCE AND UTILIZATION OF LIBRARY

The library staff is clearly instructed in the care and handling of library documents, particularly during processing, shelving and conveyance of documents. The following steps need to be taken: Bound volumes are not to be sorted out from their fore edges, as this process weakens the binding. Shelves should not be fully packed. A too-full shelf can crack spines and cause Damage when a reader tries to remove a volume. Huge volumes need to be kept flat. Dust should not be allowed to deposit on the documents because the collection of dust causes staining. Of documents and promote chemical and biological problems. Cleaning and using vacuum should be done regularly and carefully. Magnetic discs or documents containing disc(s) should not be kept open or near any magnetic or electric equipment, i.e., tape recorders, air conditioners. Etc. such materials should be kept in a dust-free, temperature and humidity-controlled room. Proper pest management is done to minimize the problems caused by insects; proper cleaning, fumigation and exposure to sunlight to the documents are done to reduce the effect of insects in the library. Repellents are used to save materials from Rats.

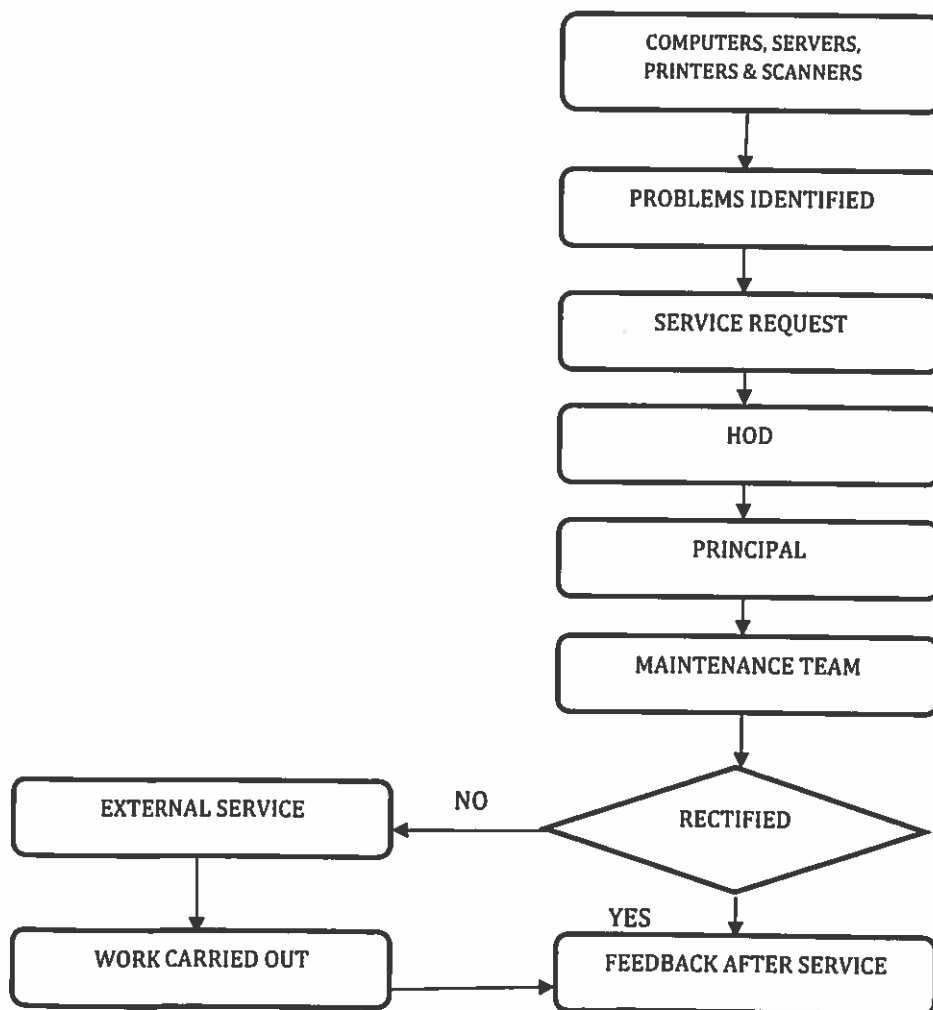

PRINCIPAL
Samskruti College of Engineering & Technology
Kondapur, Ghatkesar Municipality, Medchal (D)


PRINCIPAL
Samskruti College of Engineering & Technology
Kondapur, Ghatkesar Municipality, Medchal (D)



4. MAINTENANCE OF COMPUTING FACILITIES

The Computer Science department and Maintenance Team members maintain the computers, printers and servers. The annual maintenance includes the required software installation, antivirus and up gradation is undertaken by the team of technicians coordinated by the system administrator. To minimize-waste, electronic gadgets like projectors, computers, printers, photocopiers are serviced and reused. Intercom lines, CCTV and Wi-Fi are maintained by system administration department of the college.



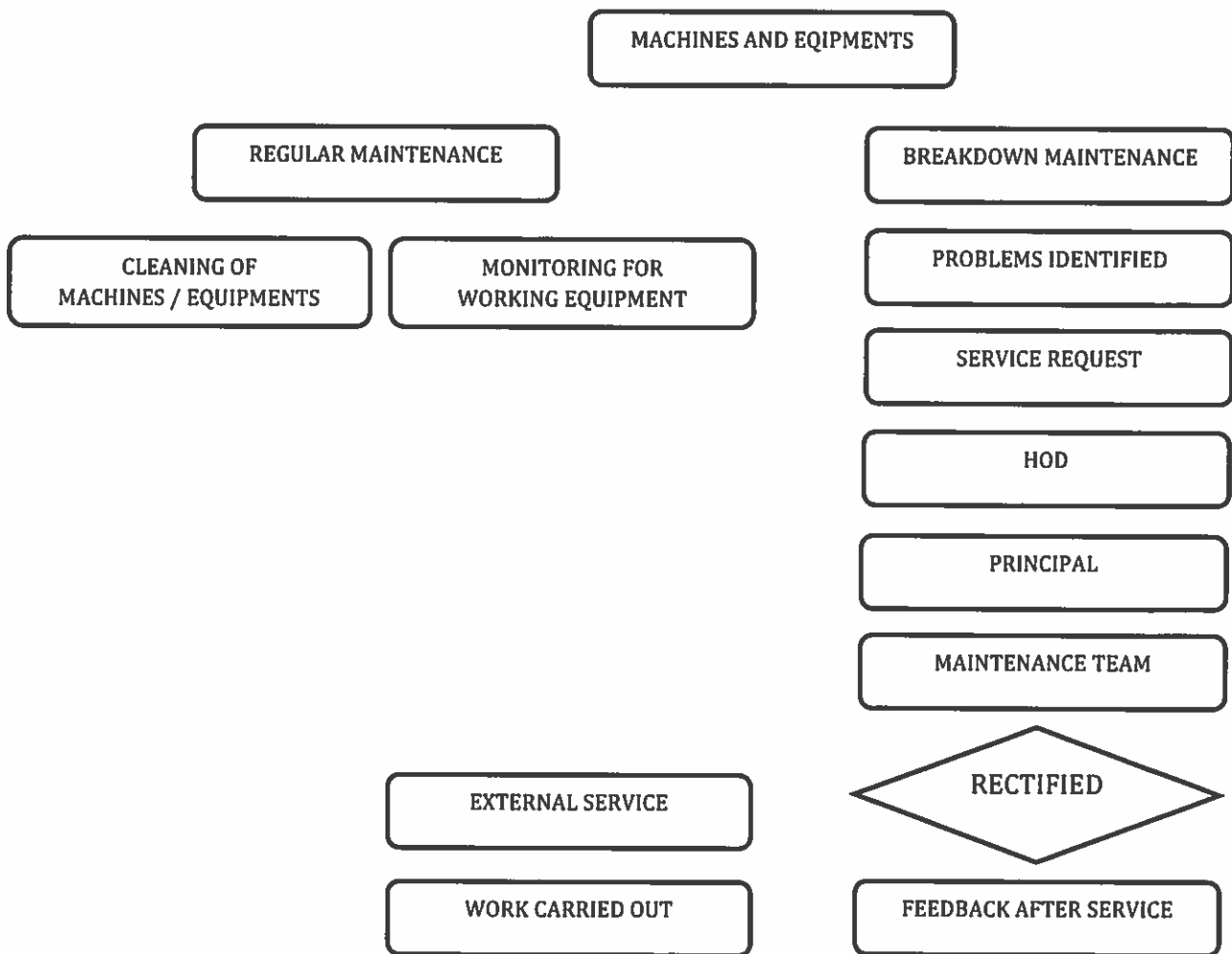
PRINCIPAL
Samskruti College of Engineering & Technology
Kondapur, Ghatkesar Municipality, Medchal (D)

PRINCIPAL
Samskruti College of Engineering & Technology
Kondapur, Ghatkesar Municipality, Medchal (D)



5. MAINTENANCE OF LABORATORY REPORT

The respective faculty members, lab assistants and other service personnel are given responsibility to maintain the equipment's under their purview. Stock registers, maintenance registers and log books are maintained in the respective laboratories to report entries and defects arising for rectification. The lab assistants are provided training to maintain the equipment by the HODs time to time enhancing their technical skills.



FLOW CHART FOR MACHINES AND EQUIPMENT MAINTENANCE


PRINCIPAL
Samskruti College of Engineering & Technology
Kondapur, Ghatkesar Municipality, Medchal (D)


PRINCIPAL
Samskruti College of Engineering & Technology
Kondapur, Ghatkesar Municipality, Medchal (D)



6. MAINTENANCE OF OTHER AMENITIES

RO consumables, membranes, filter and chemical which are to be replaced (recharged is covered within the annual maintenance contract made with the company. Cleaning of the tank is done once in three months to prevent fouling smell and deterioration/impairment in the taste of the water. The campus is equipped with 24/7 safe and adequate drinking water supply using water purifiers under Maintenance of supplier and in- house technicians. Regular maintenance of water coolers and air conditioners are done by the in-house team and major repairs are attended from external service providers. The tanks of the water coolers, filters and outdoor units of air conditioners are cleaned every month. Fire-extinguishers are installed in various blocks are maintained by the respective departments. Amenities like canteen, stationery shop and reprography accessible for all stakeholders are maintained by respective service providers. Our campuses are under surveillance and the facility is taken care of by the system administrator and with the service providers.

Facility is taken care of by the system administrator and with the service providers.

7. ANNUAL STOCK CHECKING

Annual stock checking of furniture, lab equipment, and stationery and reporting of repairs is done by lab in charges as a year ending activity and reported to the administration.

8. DAY TO DAY EMERGENCY MAINTENANCE

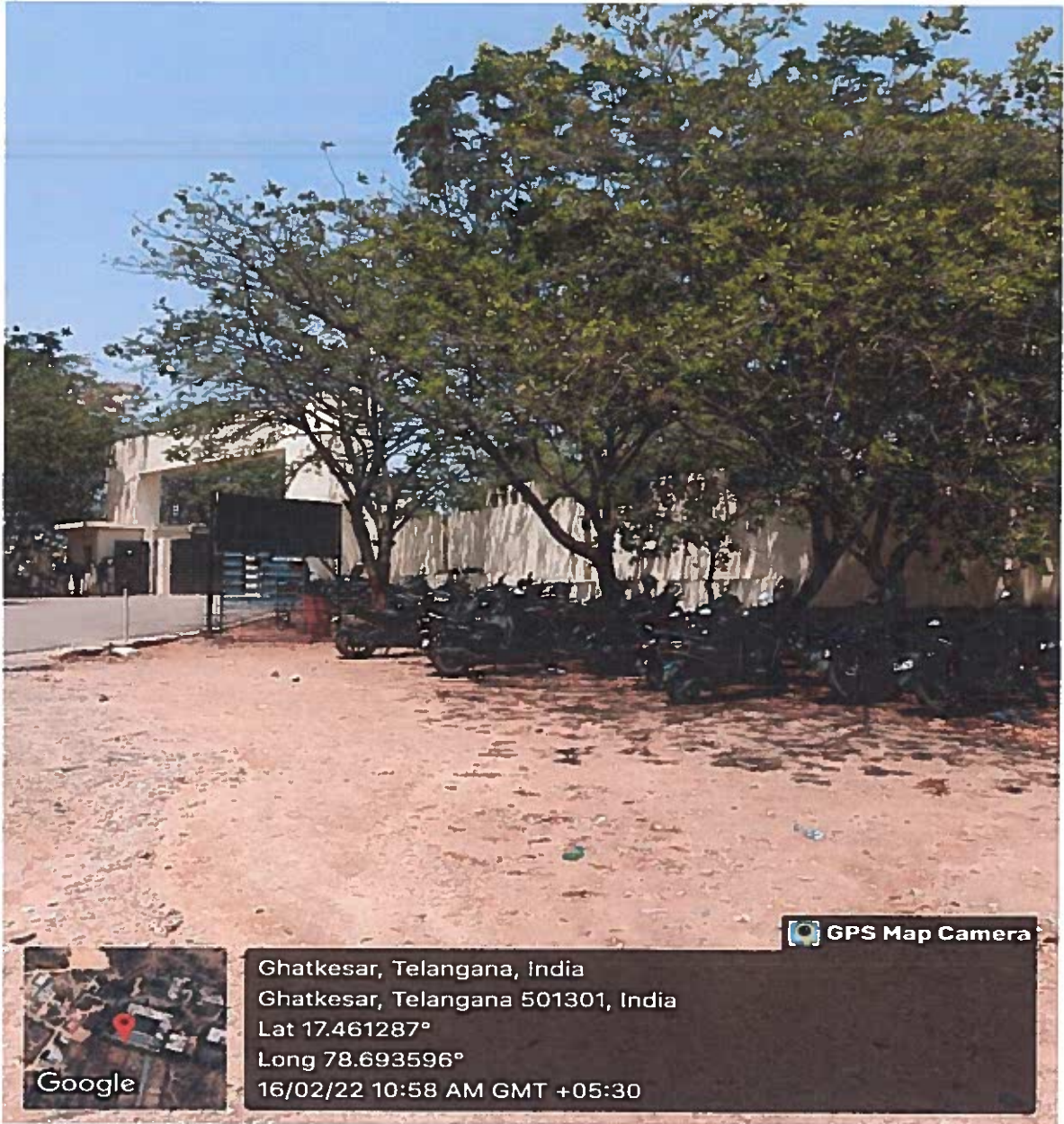
Day to day maintenance includes daily running repairs, like replacing light bulbs, repairing water leakages - leaking water pipes, taps, valves and cisterns, cleaning blocked drains, repairing locks and door handles and other minor repairs that necessitate day to day maintenance checks are taken care of by the team members


PRINCIPAL
Samskruti College of Engineering & Technology
Kondapur, Ghatkesar Municipality, Medchal (D)


PRINCIPAL
Samskruti College of Engineering & Technology
Kondapur, Ghatkesar Municipality, Medchal (D)



SAMSKRUTI COLLEGE OF ENGINEERING & TECHNOLOGY
(Approved by AICTE, New Delhi & Affiliated to JNTUH.)
Kondapur(V), Ghatkesar(M), Medchal(Dist)



GPS Map Camera



Google

Ghatkesar, Telangana, India
Ghatkesar, Telangana 501301, India
Lat 17.461287°
Long 78.693596°
16/02/22 10:58 AM GMT +05:30

PARKING


PRINCIPAL
Samskruti College of Engineering & Technology
Kondapur, Ghatkesar Municipality, Medchal (D)


PRINCIPAL
Samskruti College of Engineering & Technology
Kondapur, Ghatkesar Municipality, Medchal (D)



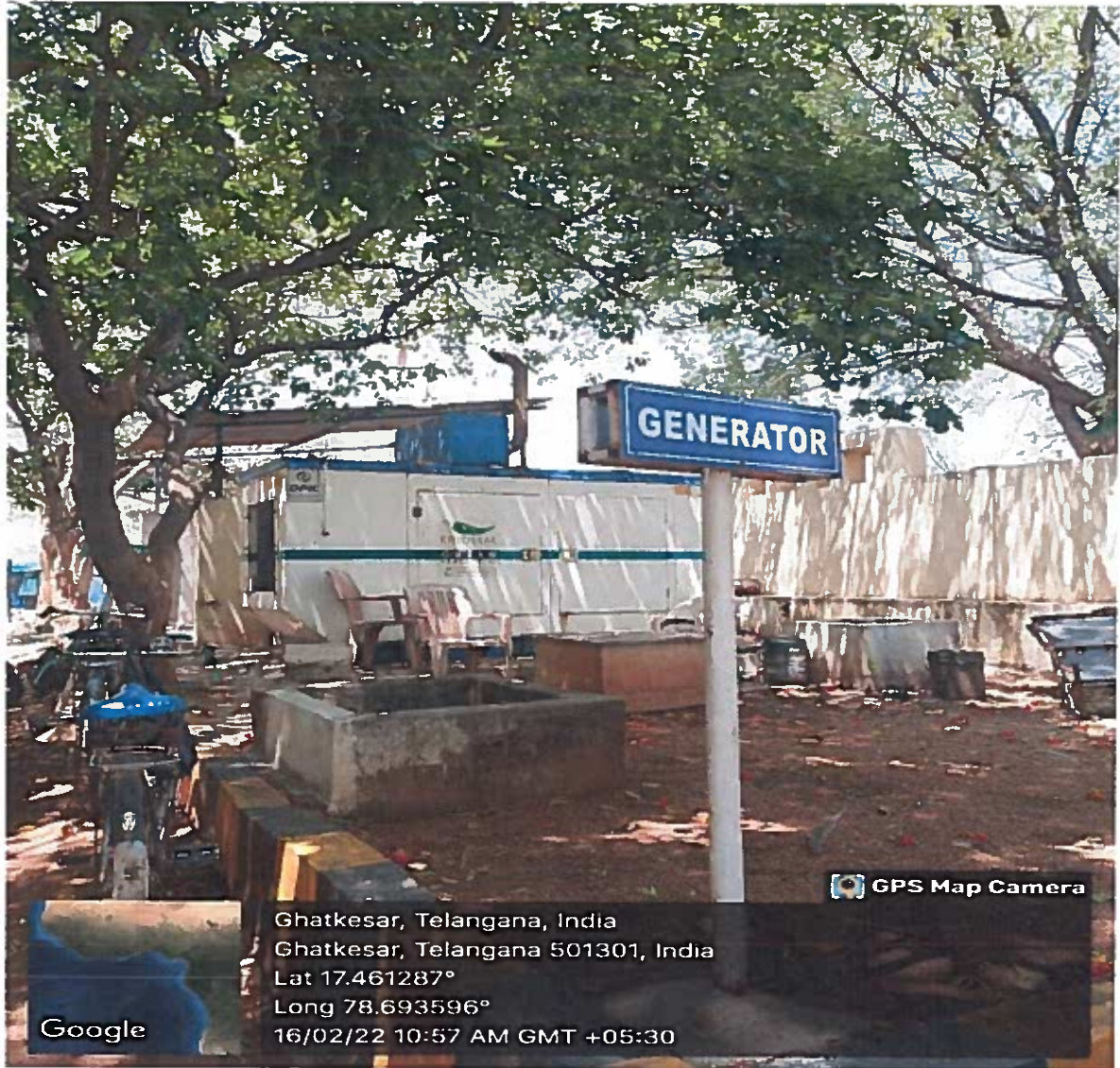
WATER SUMP


PRINCIPAL
Samskruti College of Engineering & Technology,
Kondapur, Ghatkesar Municipality, Medchal (D)


PRINCIPAL
Samskruti College of Engineering & Technology,
Kondapur, Ghatkesar Municipality, Medchal (D)




SAMSKRUTI COLLEGE OF ENGINEERING & TECHNOLOGY
(Approved by AICTE, New Delhi & Affiliated to JNTUH.)
Kondapur(V), Ghatkesar(M), Medchal(Dist)



GENARATOR


PRINCIPAL

Samskruti College of Engineering & Technology
Kondapur, Ghatkesar Municipality, Medchal (D)


PRINCIPAL

Samskruti College of Engineering & Technology
Kondapur, Ghatkesar Municipality, Medchal (D)



FIRE EXTINGUISHER


PRINCIPAL
Samskruti College of Engineering & Technology
Kondapur, Ghatkesar Municipality, Medchal (D)


PRINCIPAL
Samskruti College of Engineering & Technology
Kondapur, Ghatkesar Municipality, Medchal (D)

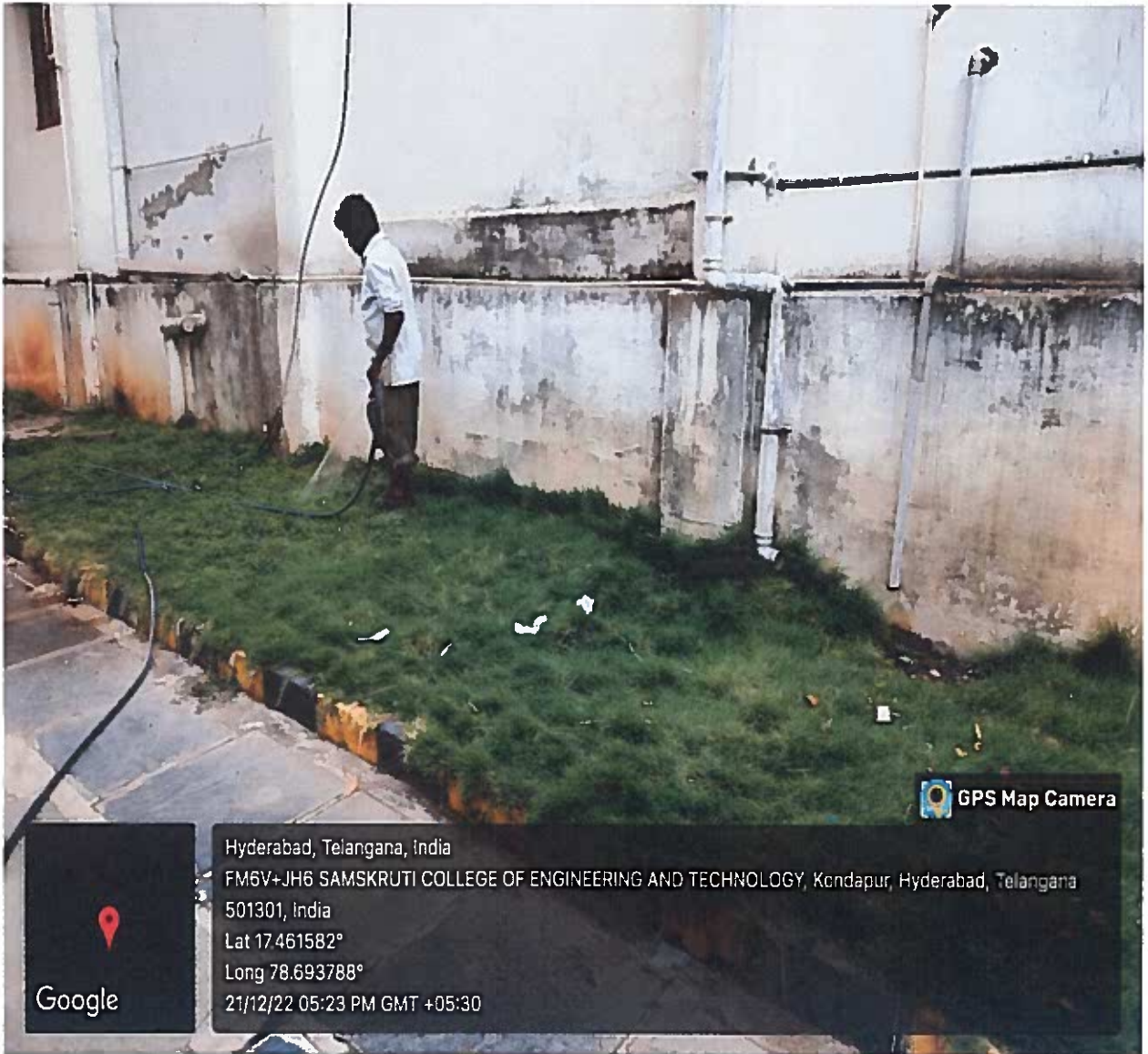


SAMSKRUTI COLLEGE OF ENGINEERING & TECHNOLOGY
(Approved by AICTE, New Delhi & Affiliated to JNTUH.)
Kondapur(V), Ghatkesar(M), Medchal(Dist)




PRINCIPAL
Samskruti College of Engineering & Technology
Kondapur, Ghatkesar Municipality, Medchal (D)

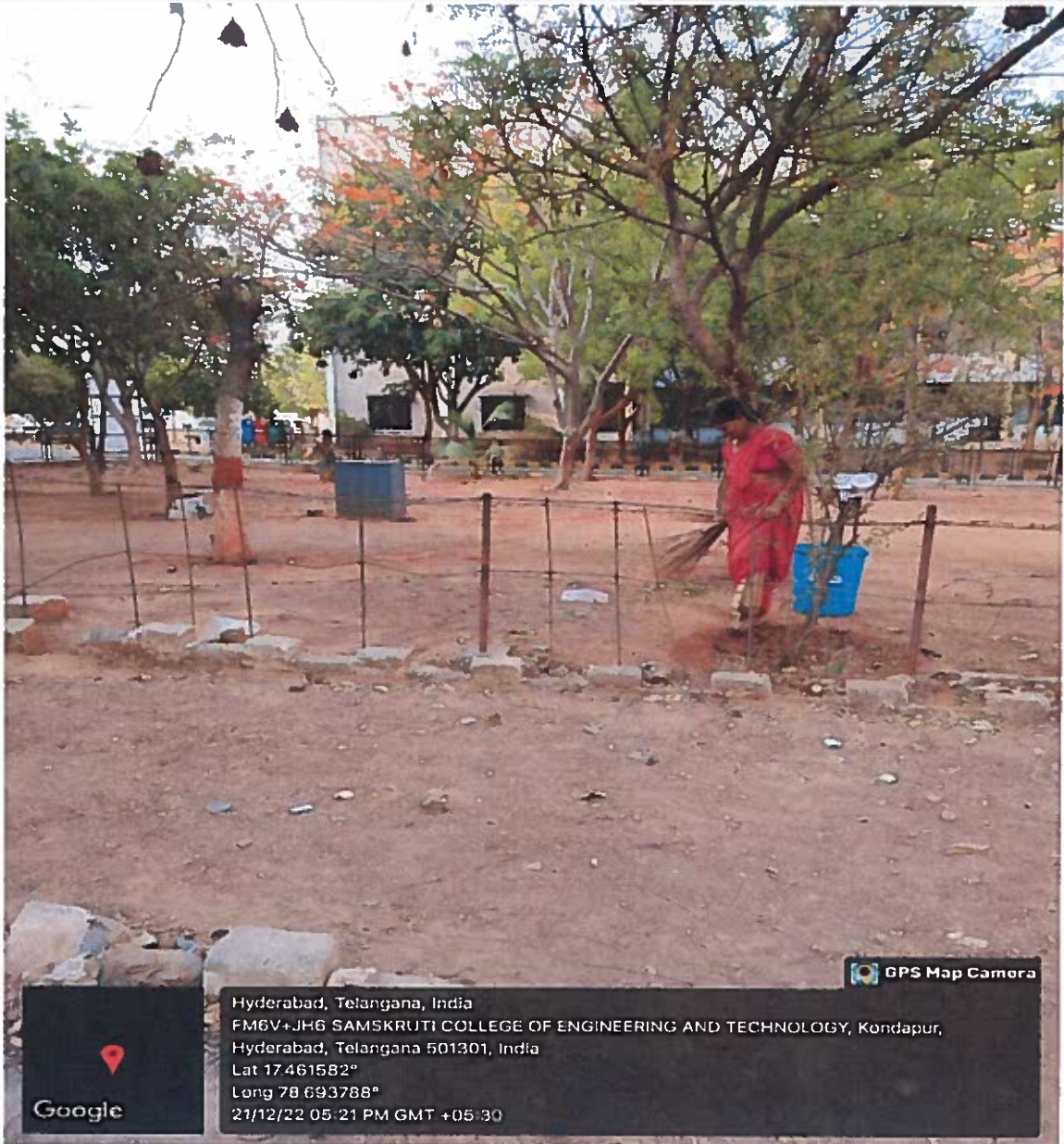

PRINCIPAL
Samskruti College of Engineering & Technology
Kondapur, Ghatkesar Municipality, Medchal (D)



GARDENING


PRINCIPAL
Samskruti College of Engineering & Technology
Kondapur, Ghatkesar Municipality, Medchal (D)


PRINCIPAL
Samskruti College of Engineering & Technology
Kondapur, Ghatkesar Municipality, Medchal (D)



GROUND CLEANING

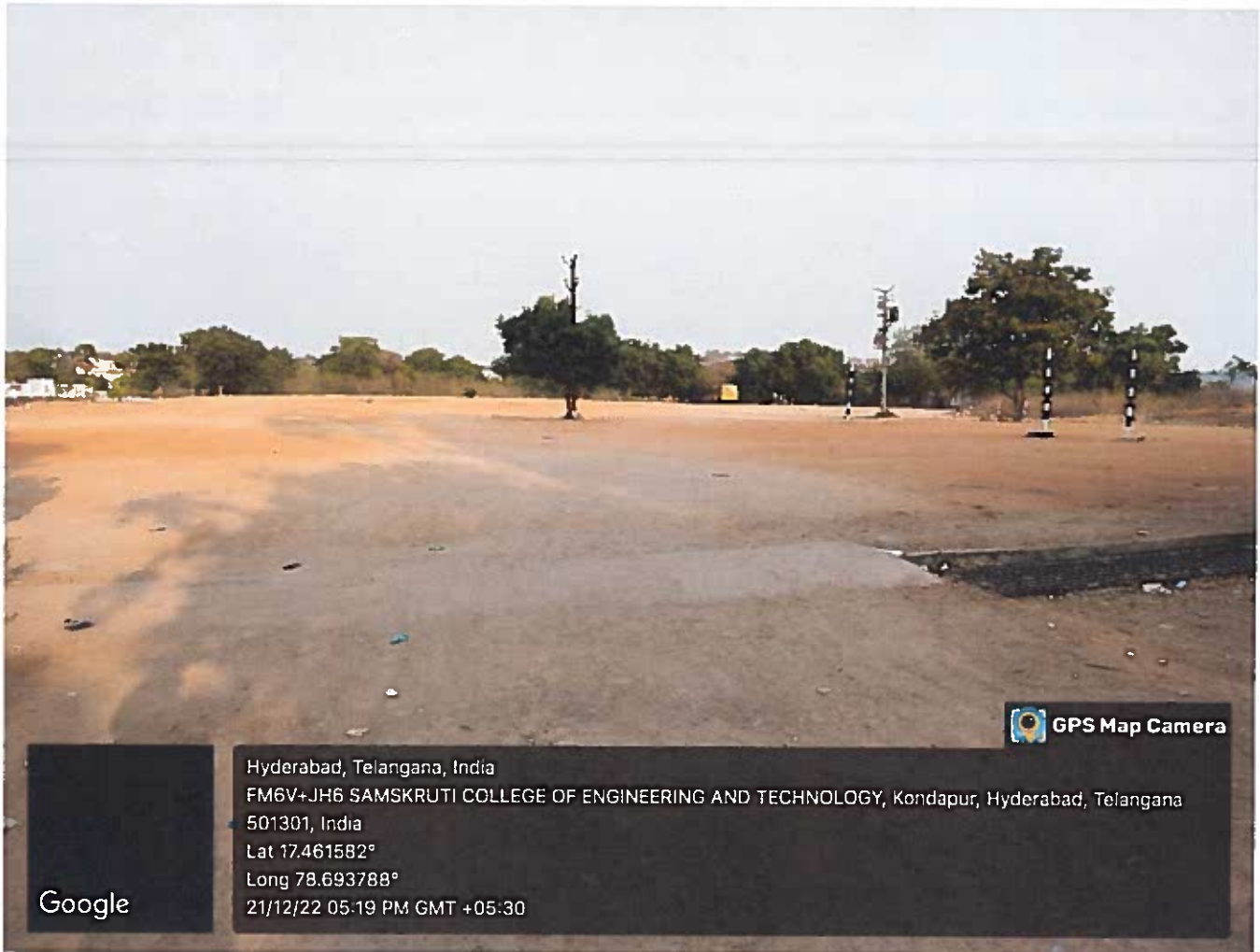
PRINCIPAL

Samskruti College of Engineering & Technology
Kondapur, Ghatkesar Municipality Medchal (D)

PRINCIPAL
Samskruti College of Engineering & Technology
Kondapur, Ghatkesar Municipality, Medchal (D)



SAMSKRUTI COLLEGE OF ENGINEERING & TECHNOLOGY
(Approved by AICTE, New Delhi & Affiliated to JNTUH.)
Kondapur(V), Ghatkesar(M), Medchal(Dist)




GPS Map Camera

Google

Hyderabad, Telangana, India
FM6V+JH6 SAMSKRUTI COLLEGE OF ENGINEERING AND TECHNOLOGY, Kondapur, Hyderabad, Telangana
501301, India
Lat 17.461582°
Long 78.693788°
21/12/22 05:19 PM GMT +05:30

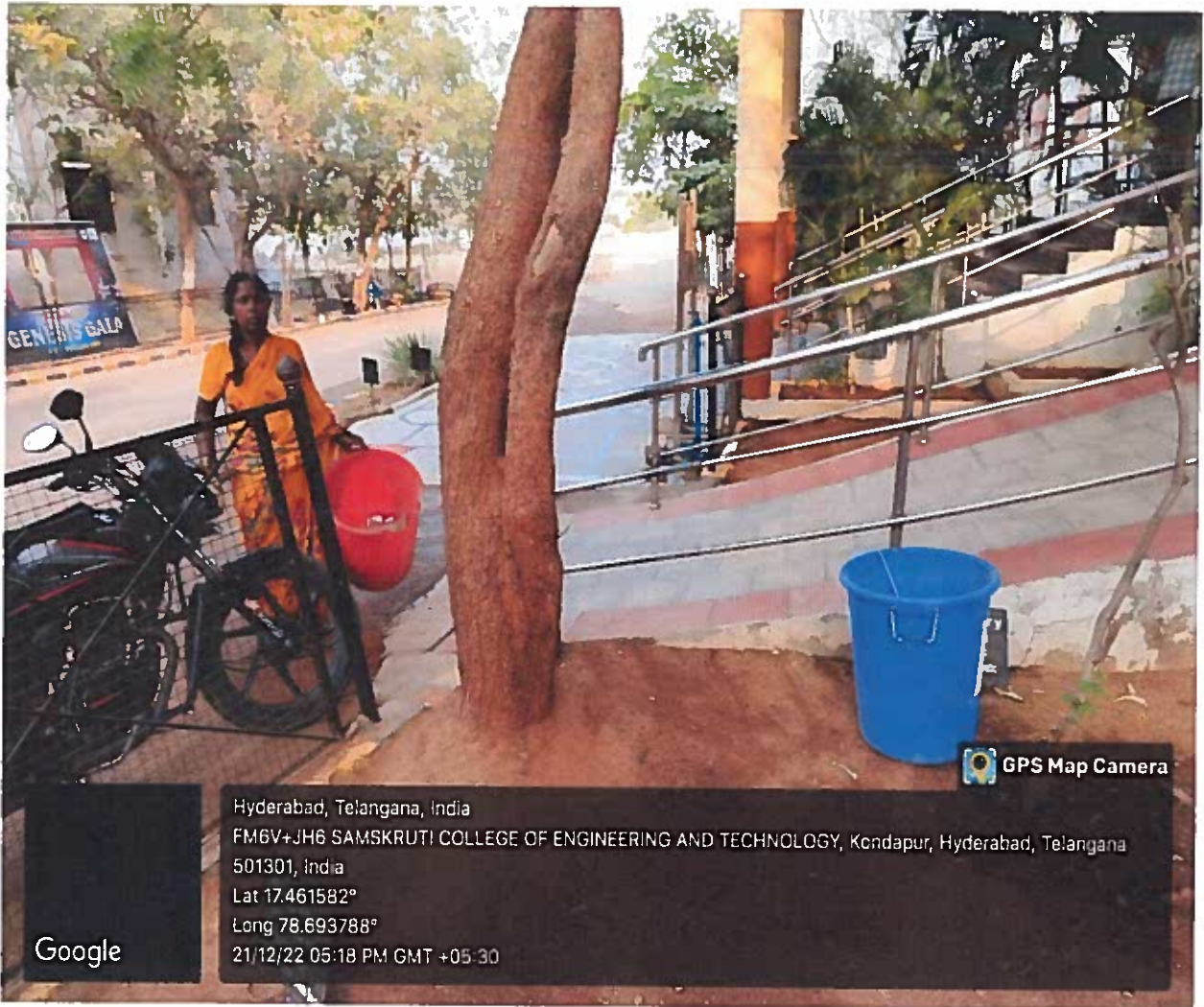
GROUND


PRINCIPAL
Samskruti College of Engineering & Technology
Kondapur, Ghatkesar Municipality, Medchal (D)



PRINCIPAL
Samskruti College of Engineering & Technology,
Kondapur, Ghatkesar Municipality, Medchal (D)




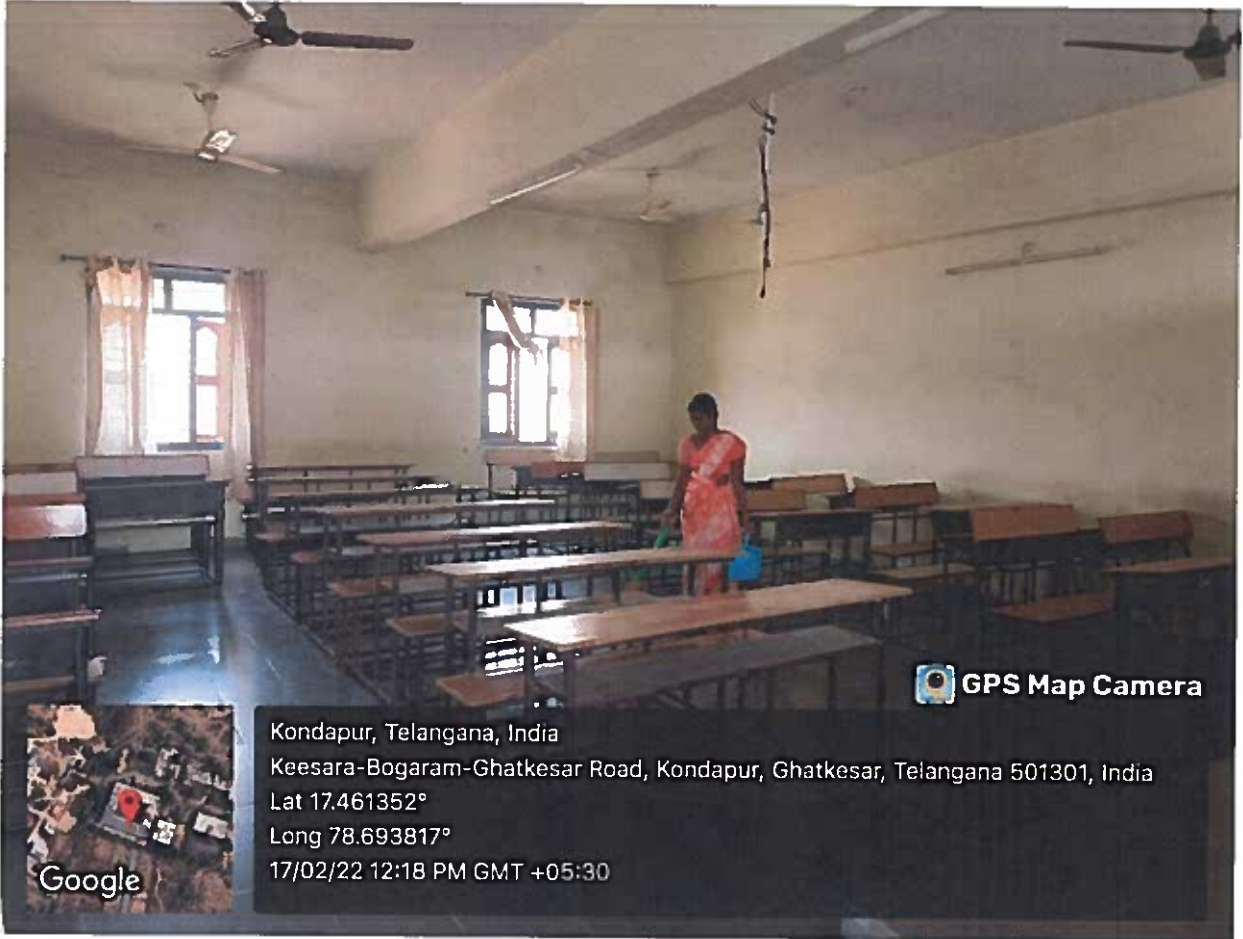
SAMSKRUTI COLLEGE OF ENGINEERING & TECHNOLOGY
(Approved by AICTE, New Delhi & Affiliated to JNTUH.)
Kondapur(V), Ghatkesar(M), Medchal(Dist)




PATHWAY CLEANING



PRINCIPAL
Samskruti College of Engineering & Technology
Kondapur, Ghatkesar Municipality, Medchal (D)

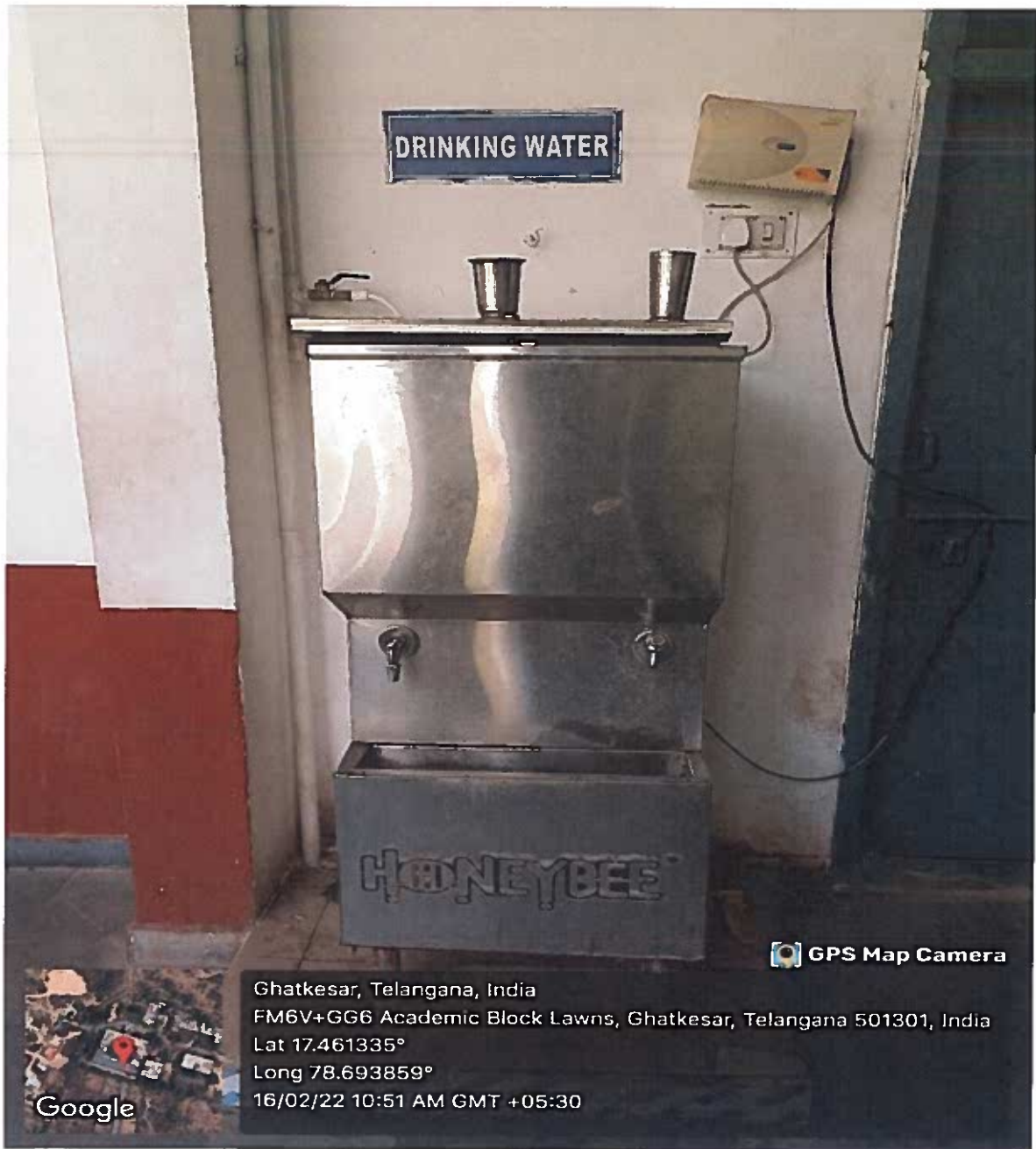

PRINCIPAL
Samskruti College of Engineering & Technology
Kondapur, Ghatkesar Municipality, Medchal (D)



CLASS ROOM MAINTANENCE


PRINCIPAL
Samskruti College of Engineering & Technology
Kondapur, Ghatkesar Municipality, Medchal (D)


PRINCIPAL
Samskruti College of Engineering & Technology
Kondapur, Ghatkesar Municipality, Medchal (D)



REFRIGIRATOR


PRINCIPAL
Samskruti College of Engineering & Technology
Kondapur, Ghatkesar Municipality, Medchal (D)


PRINCIPAL
Samskruti College of Engineering & Technology
Kondapur, Ghatkesar Municipality, Medchal (D)



MINERAL WATER


PRINCIPAL
Samskruti College of Engineering & Technology
Kondapur, Ghatkesar Municipality, Medchal (D)



PRINCIPAL
Samskruti College of Engineering & Technology,
Kondapur, Ghatkesar Municipality, Medchal (D)



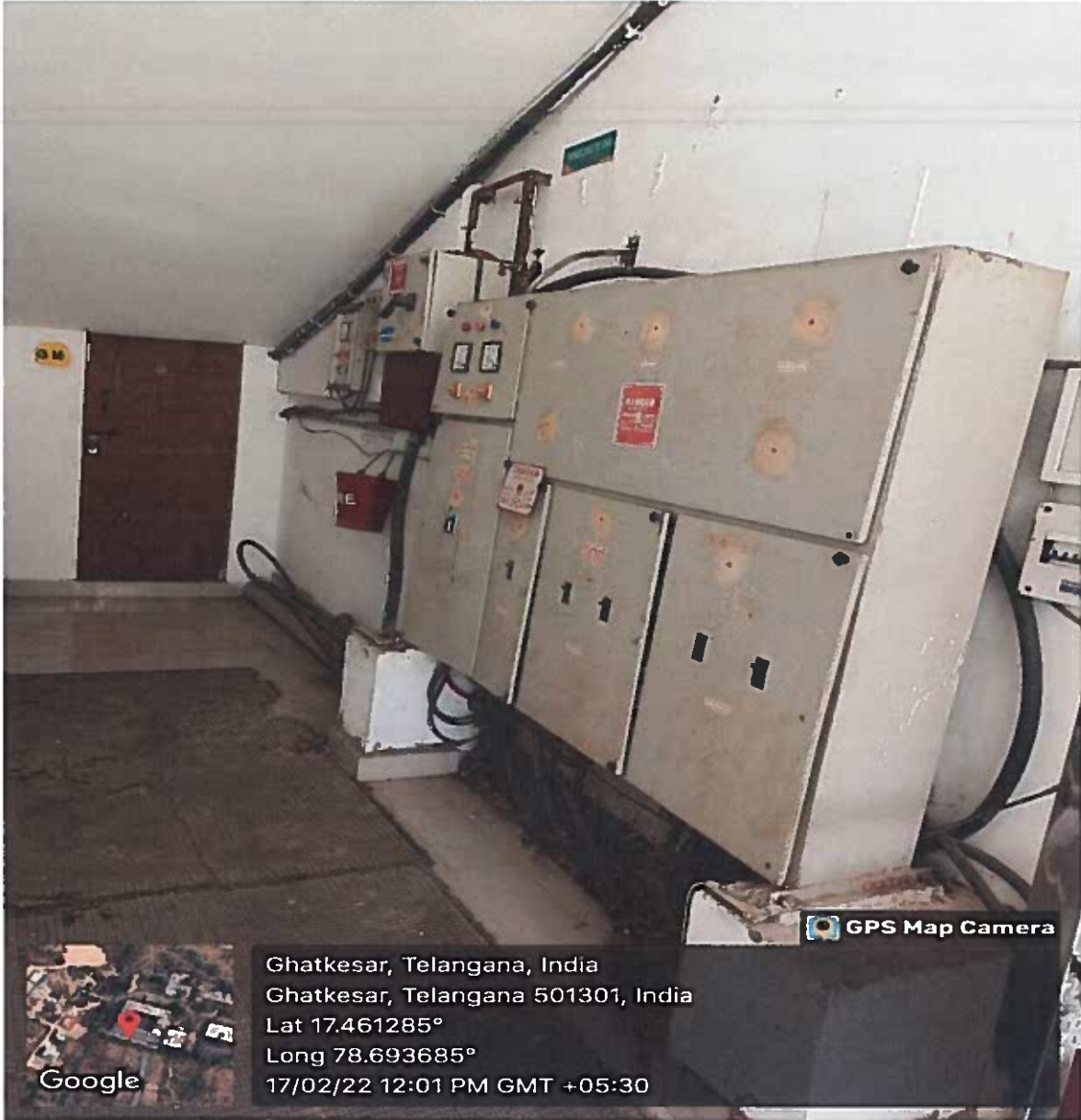
SAMSKRUTI COLLEGE OF ENGINEERING & TECHNOLOGY
 (Approved by AICTE, New Delhi & Affiliated to JNTUH.)
Kondapur(V), Ghatkesar(M), Medchal(Dist)



TRANSPORT FACILITY


 PRINCIPAL
 Samskruti College of Engineering & Technology
 Kondapur, Ghatkesar Municipality, Medchal (D)

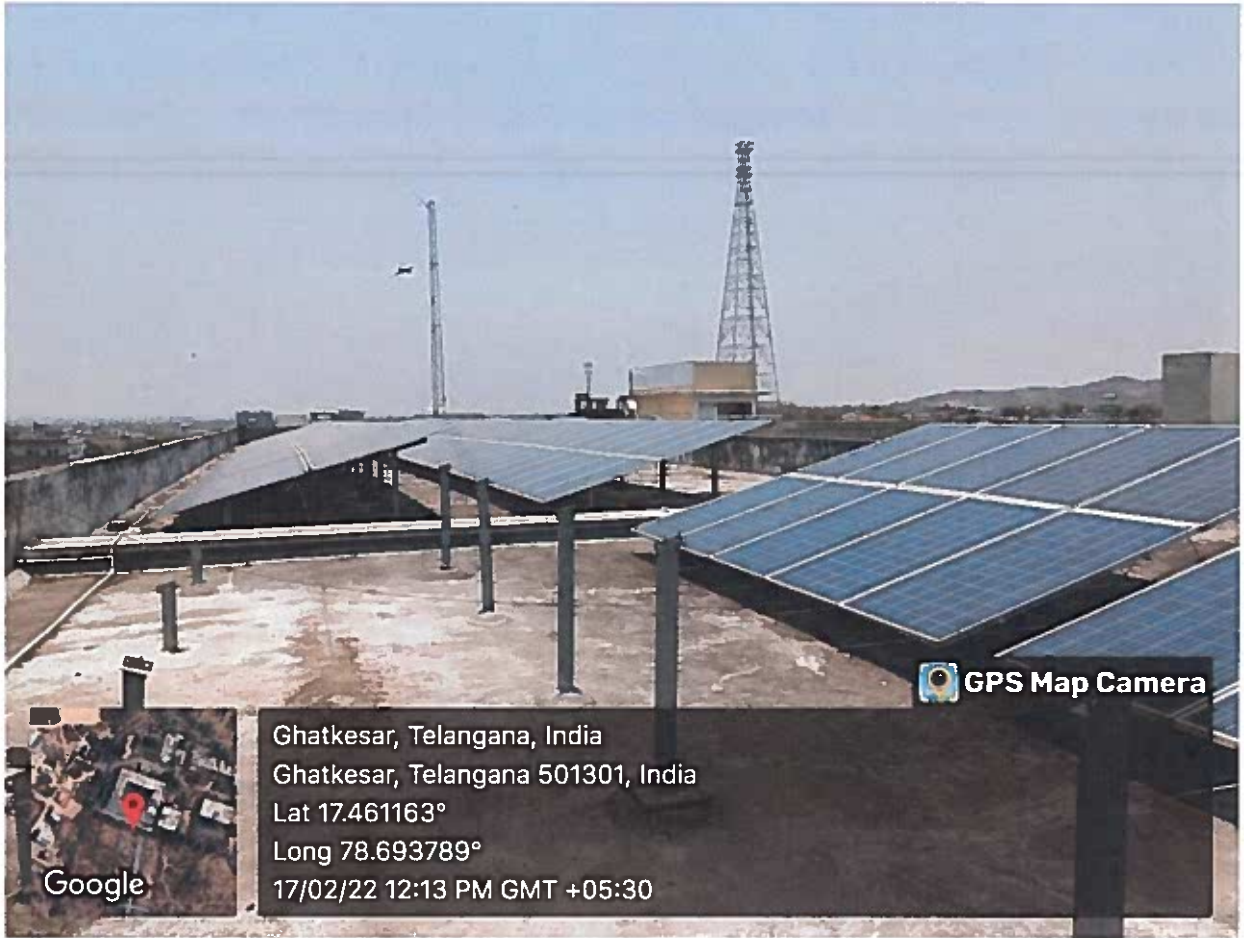

 PRINCIPAL
 Samskruti College of Engineering & Technology
 Kondapur, Ghatkesar Municipality, Medchal (D)



CONTROL PANEL


PRINCIPAL
Samskruti College of Engineering & Technology
Kondapur, Ghatkesar Municipality, Medchal (D)

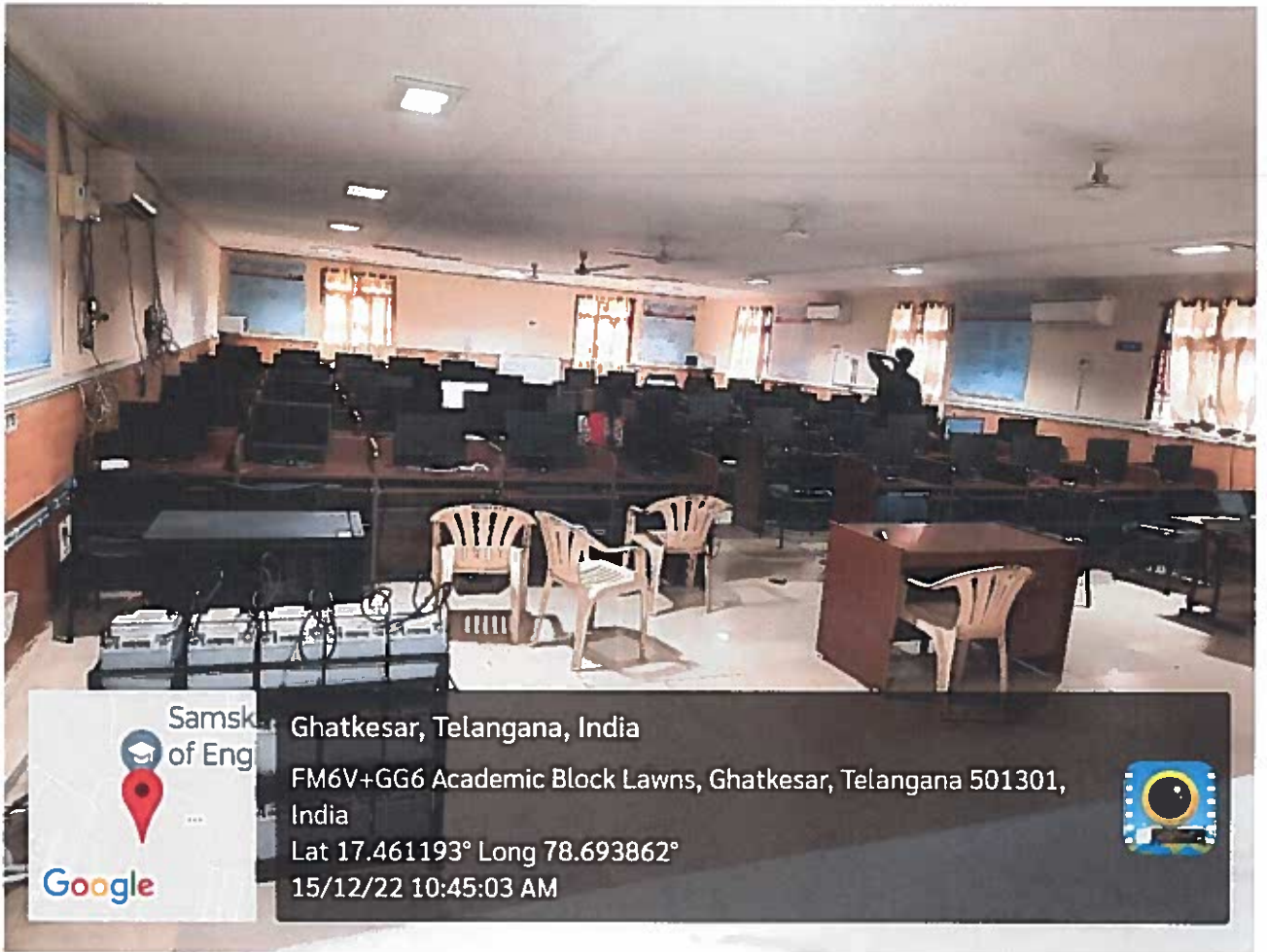

PRINCIPAL
Samskruti College of Engineering & Technology
Kondapur, Ghatkesar Municipality, Medchal (D)



SOLAR PANEL

PRINCIPAL
Samskruti College of Engineering & Technology
Kondapur, Ghatkesar Municipality, Medchal (D)

PRINCIPAL
Samskruti College of Engineering & Technology
Kondapur, Ghatkesar Municipality, Medchal (D)




COMPUTER MAINTANENCE


PRINCIPAL
Samskruti College of Engineering & Technology
Kondapur, Ghatkesar Municipality, Medchal (D)

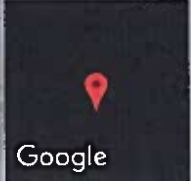
PRINCIPAL
Samskruti College of Engineering & Technology
Kondapur, Ghatkesar Municipality, Medchal (D)



LIBRARY UTILISATION


PRINCIPAL
Samskruti College of Engineering & Technology
Kondapur, Ghatkesar Municipality, Medchal (D)


PRINCIPAL
Samskruti College of Engineering & Technology
Kondapur, Ghatkesar Municipality, Medchal (D)



Hyderabad, Telangana, India
FM6V+JH6 SAMSKRUTI COLLEGE OF ENGINEERING AND TECHNOLOGY, Kondapur, Hyderabad, Telangana
501301, India
Lat 17.461582°
Long 78.693788°
21/12/22 05:22 PM GMT +05:30

GPS Map Camera

SPORTS ROOM MAINTANENCE

PRINCIPAL
Samskruti College of Engineering & Technology,
Kondapur, Ghatkesar Municipality, Medchal (D)

PRINCIPAL
Samskruti College of Engineering & Technology,
Kondapur, Ghatkesar Municipality, Medchal (D)



SAMSKRUTI COLLEGE OF ENGINEERING & TECHNOLOGY
 (Approved by AICTE, New Delhi & Affiliated to JNTUH.)
Kondapur(V), Ghatkesar(M), Medchal(Dist)



Teacher's Attendance Register for the month of

Sl. No.	Name of the Teacher	1	2	3	4	5	6	7	8	9	10	11	12	13	14	15	16	17	18	19	20	21	22	23	24	25	26	27	28	29	30	31	Total	
7670871755	MAHESH CHANDRA																																	
6304117530	F. Ravi																																	
	TOPPI																																	
	SALMAN RAVI																																	
9297501147	S.K. RASITH																																	
9707115235	MD. RIYAZ ALI																																	
79544484	N. ARVIND																																	

GPS Map Camera

Google

Ghatkesar, Telangana, India
 FM6V+GG6 Academic Block Lawns, Ghatkesar, Telangana 501301, India
 Lat 17.461218°
 Long 78.693838°
 25/06/22 11:07 PM GMT +05:30

HOUSE KEEPING STAFF

PRINCIPAL
 Samskruti College of Engineering & Technology
 Kondapur, Ghatkesar Municipality, Medchal (D)

PRINCIPAL
 Samskruti College of Engineering & Technology
 Kondapur, Ghatkesar Municipality, Medchal (D)



SAMSKRUTI COLLEGE OF ENGINEERING & TECHNOLOGY
 (Approved by AICTE, New Delhi & Affiliated to JNTUH.)
Kondapur(V), Ghatkesar(M), Medchal(Dist)



5


Teacher's Attendance Register for the month of June 2022


Sl. No.	Name of the Teacher with Full Name	Roll No.	1	2	3	4	5	6	7	8	9	10	11	12	13	14	15	16	17	18	19	20	21	22	23	24	25	26	27	28	29	30	Remarks	
1	SHIVANED	951114144																																
2	శ్రీవసుది	9702 66																																
3	VENKATA KUMARI																																	
4	సైదుల రమణ	9402 28259																																
5	RAJENDER REDDY																																	
6	రామేశ్వర్ రెడ్డి	9639980234																																
7	రామేశ్వర్ రెడ్డి	907465 1434																																
8	ANAND																																	
9	భానకి	779930660																																
10	TRANEEN																																	

GPS Map Camera
 Ghatkesar, Telangana, India
 FM6V+GG6 Academic Block Lawns, Ghatkesar, Telangana 501301, India
 Lat 17.461218°
 Long 78.693838°
 25/06/22 12:08 PM GMT +05:30

Google

SECURITY


 PRINCIPAL
 Samskruti College of Engineering & Technology
 Kondapur, Ghatkesar Municipality, Medchal (D)


 PRINCIPAL
 Samskruti College of Engineering & Technology
 Kondapur, Ghatkesar Municipality, Medchal (D)